



ICE Model 28C Vibratory Pile Driver/Extractor with Model 350E Power Unit

New design combines high eccentric moment (2,800 in-lbs, 32 kg-m) and suspended weight with clamp under 9,800 lbs (4445 kg)

Lighter weight for increased reach or use with smaller cranes

Reduced height for better access in low-overhead situations

Up to 55 tons (490 kN) line pull for extraction



**International Construction Equipment, Inc.
301 Warehouse Drive
Matthews, NC 28104 USA**

**888-ICE-USA1 / 704-821-8200
sales@iceusa.com
www.iceusa.com**

Patented Dual-pull™ suppressor provides maximum vibration isolation during driving and light extraction combined with high pull capability for tough extraction jobs.

350HP (261 kW) CAT C9 Tier 3 (State IIIA) engine meets all EPA & EU emission regulations.

Computer controls on power unit reduce fuel consumption, pinpoints repair needs, provide diagnostics and logs.

Optional 3,000 lbs (1360 kg) of bias weight increases pile penetration rates in difficult soils.

Environmentally friendly, Chevron Clarity® non-toxic, biodegradable hydraulic oil.

Maximum efficiency and reliability ensured by our open-loop hydraulic system. Highest quality, reliable piston pumps and motor.

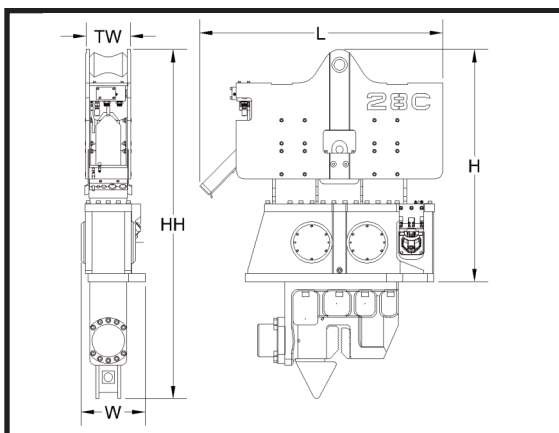
Remote-control pendant for vibrator and clamp with emergency stop. Engine speed control for fuel efficiency.

Full range of clamps available for sheet piling, H-Beams, pipe & caissons and timber & concrete piles.

Adaptable for underwater, low headroom or box leads operation.

Designed and manufactured in USA by ICE®, world leader in cost-effective foundation equipment since 1974.

ICE Model 28C Vibratory Pile Driver / Extractor

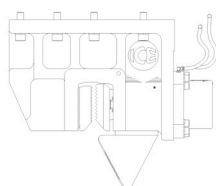


Model 28C Vibrator Specifications

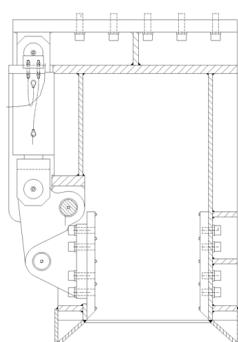
Eccentric moment	2,800 in-lbs	32 kg-m
Frequency range	800-1700 vpm	
Driving force	118 tons	1050 kN
Centrifugal force	115 tons	1023 kN
Amplitude (free w/o clamp)	1.2 in	30 mm
Standard line pull for extracting	55 tons	490 kN
Maximum line pull for extracting	55 tons	490 kN
Weight (no clamp or hoses)	6,880 lbs	3121 kg
Non-vibrating weight	2,140 lbs	971 kg
Height without clamp (H)	76 in	1915 mm
Length (L)	79 in	2000 mm
Width (W)	21 in	527 mm
Throat width (TW)	14.25 in	362 mm
Hydraulic hose length	150 ft	46 m
Hydraulic hose weight	1,425 lbs	646 kg
Height with sheeting clamp* (HH)	114 in	2877 mm
Weight with sheeting clamp & 1/2 hoses*	9,743 lbs	4420 kg
Height with beam & caisson clamps*	101 in	2565 mm
Weight with beam & caisson clamps*	10,314 lbs	4680 kg

* See "Clamps and Accessories" for detail description

Clamps and Accessories



**Model 140C
Sheeting Clamp**
Clamping force
140 tons, 1245 kN
Weight
2,150 lbs, 975 kg



**Model 40
Wood, Concrete &
Pipe Clamp**
Clamping force
40 tons, 355 kN
Weight
3,220 lbs, 1460 kg



**5' Caisson Beam with
Model 100BH Caisson Clamps**
Clamping force
220 tons, 1975 kN
Weight
3,000 lbs, 1360 kg

Other Model 28C Accessories

6' Caisson beam
10' Clamp extension
90° Turning plate
Bias weights
Vibrator stand

Model 350E Power Unit Specifications

Engine	Caterpillar C9	
Power	350 HP	261 kW
Operating speed	1,850 rpm	1850 rpm
Max. motors pressure	5,500 psi	380 bar
Motors flow (no load)	97 gpm	367 lpm
Clamp pressure	4,500 psi	310 bar
Clamp flow	6 gpm	24 lpm
Weight (w/ full fluid & 1/2 fuel)	11,350 lbs	5150 kg
Length	130 in	3300 mm
Width	63 in	1600 mm
Height	87 in	2200 mm
Hydraulic reservoir	275 gal	1040 liters
Fuel capacity	118 gal	445 liters

Constant improvement and engineering progress make it necessary that ICE, Inc reserve the right to make specification changes without notice. Please consult us for the latest available information.